

# State of Wyoming Corner Record

(in compliance with the CORNER PERPETUATION AND FILING ACT, Wyoming Statutes, 1977, Section 36-11-101, et. seq., and the Rules and Regulations of the Board of Registration for Professional Engineers and Professional Land Surveyors)

Reverse side of this form may be used if more space is needed.

Record of original survey and citation of source of historical information (if corner is lost or obliterated). Description of corner monumentation evidence found and/or monument and accessories established to perpetuate the location of this corner. Sketch of relative location of monument, accessories, and reference points with course and distance to adjacent corner(s) (if determined in this survey). Method and rationale for reestablishment of lost or obliterated corner.

GLO RECORD: UNKNOWN.

MONUMENT FOUND: FOUND A DESTROYED 3" ALUMINUM CAP ON PIPE.

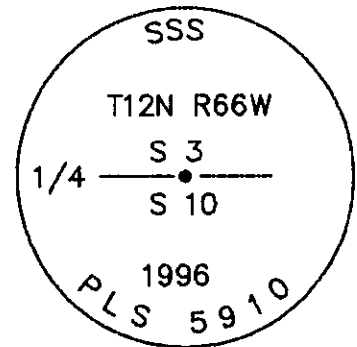
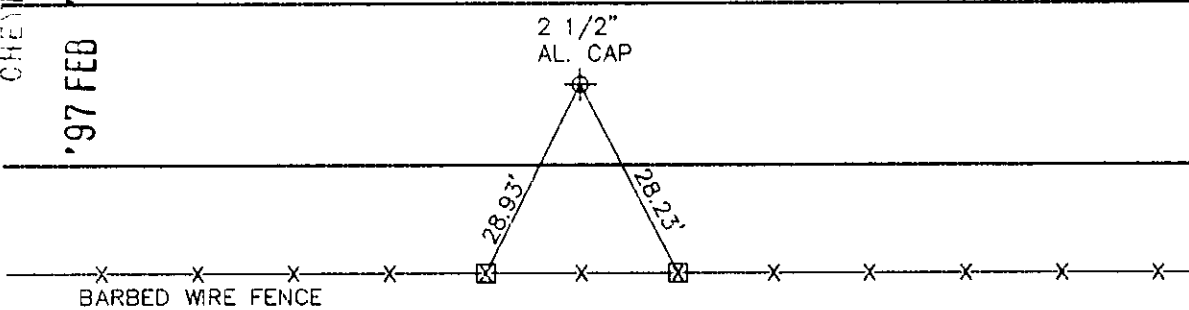
MONUMENT SET: RESET A 5/8" X 24" REBAR WITH 2 1/2" ALUMINUM CAP, SET IN REMAINDER OF OLD PIPE MONUMENT, CAP MARKED AS SHOWN BELOW.

REFERENCES: FOUND P.K.'S AND WASHERS.

197540

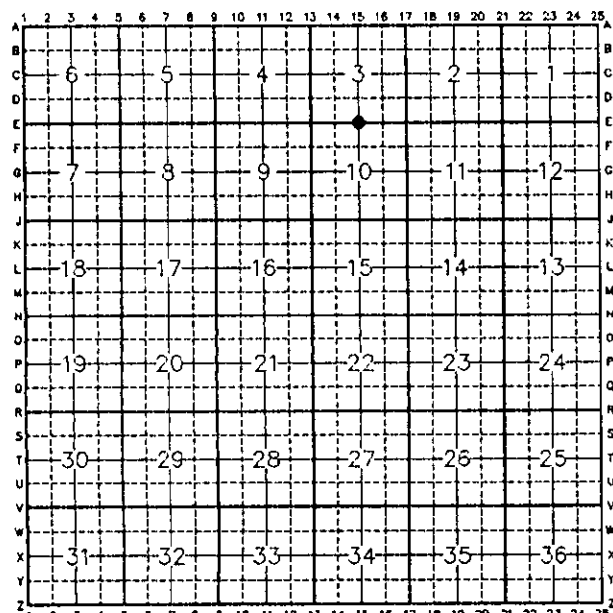
LARAMIE COUNTY CLERK  
CHEYENNE, WY.

'97 FEB 7 AM 8 37



Date of Field Work: 8-15-96 Office Reference: 96197

CROSS INDEX DIAGRAM



Firm/Agency, Address

STEIL SURVEYING SERVICES, LLC  
1102 WEST 19th STREET  
CHEYENNE WY 82001

This corner record was prepared by me or under my direction and supervision.

SEAL & SIGNATURE

Telephone Number: (307) 634-7273



**BOOK 1443**

Corner Name: NORTH 1/4 Section: 10 T 12N R 66W; 6th P.M. Cross-Index No.: E-15  
SBRPEPLS/PLSW: March 1994

**0951**